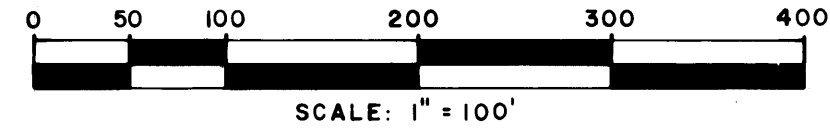


PLAT OF
CRANE CREEK COUNTRY CLUB
 PHASE III
 IN SECTIONS 11 & 12, TOWNSHIP 38 SOUTH, RANGE 40 EAST
 MARTIN COUNTY, FLORIDA



UNPLATTED

I, LOUISE V. ISAACS, COUNTY CLERK OF MARTIN COUNTY, FLORIDA, HEREBY CERTIFY THAT THIS PLAT HAS BEEN EXAMINED AND THAT IT COMPLIES IN FORM WITH ALL THE REQUIREMENTS OF THE STATUTES OF FLORIDA PERTAINING TO MAPS AND PLATS, AND THAT THIS PLAT HAS BEEN FILED FOR RECORD IN PLAT BOOK 7, PAGE 74, PUBLIC RECORDS OF MARTIN COUNTY, FLORIDA, THIS DAY OF _____, A.D. 19__.

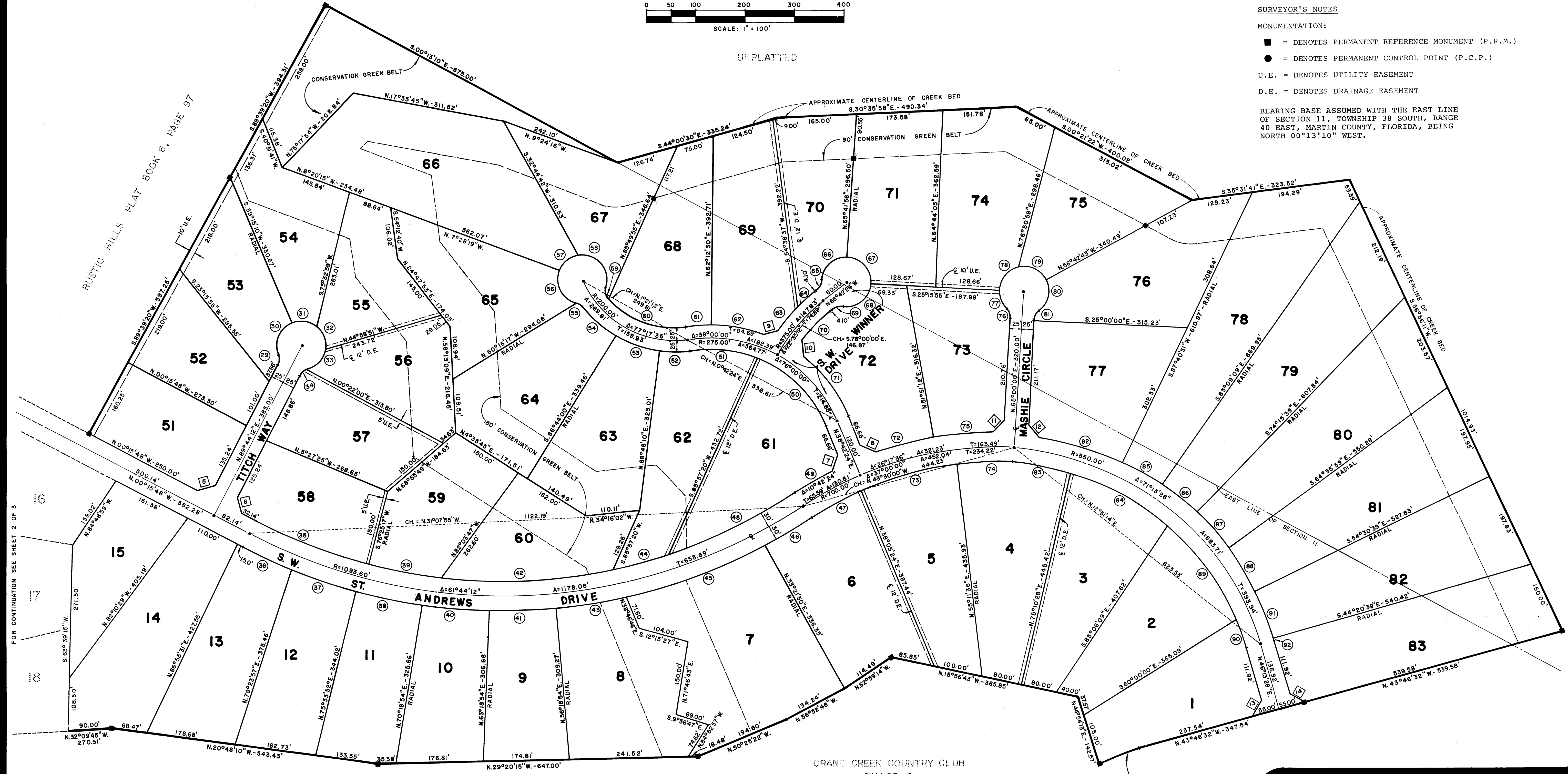
LOUISE V. ISAACS, CLERK MARTIN COUNTY, FLORIDA
 BY _____
 FILE NO. _____

SURVEYOR'S NOTES

MONUMENTATION:

- = DENOTES PERMANENT REFERENCE MONUMENT (P.R.M.)
- = DENOTES PERMANENT CONTROL POINT (P.C.P.)
- U.E. = DENOTES UTILITY EASEMENT
- D.E. = DENOTES DRAINAGE EASEMENT

BEARING BASE ASSUMED WITH THE EAST LINE OF SECTION 11, TOWNSHIP 38 SOUTH, RANGE 40 EAST, MARTIN COUNTY, FLORIDA, BEING NORTH 00°13'10" WEST.



FOR CONTINUATION SEE SHEET 2 OF 3

NOTE:
 IN ADDITION TO EASEMENTS SHOWN ON PLAT THERE IS A 10' UTILITY EASEMENT CONTIGUOUS TO ROAD RIGHT OF WAY LINE ACROSS ALL LOTS

CRANE CREEK COUNTRY CLUB
 PHASE I
 PLAT BOOK 7, PAGE 22

LINDAHL, BROWNING & FERRARI, INC.
 Consulting Engineers, Planners & Surveyors
 426 INDIANTOWN ROAD, JUPITER, FLORIDA 33458
 951 COLORADO AVENUE, STUART, FLORIDA 31944